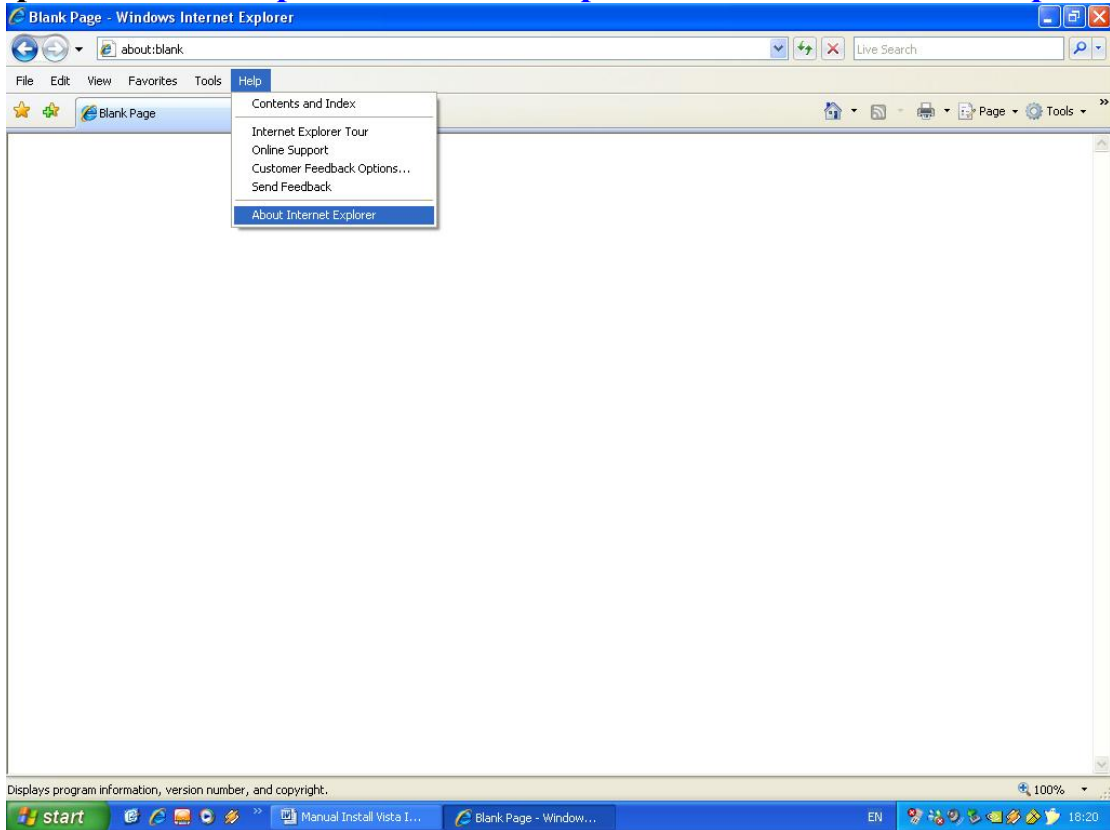


Step for check Internet Explorer (IE) version

Open Internet Explorer → Click Help → Click About Internet Explorer



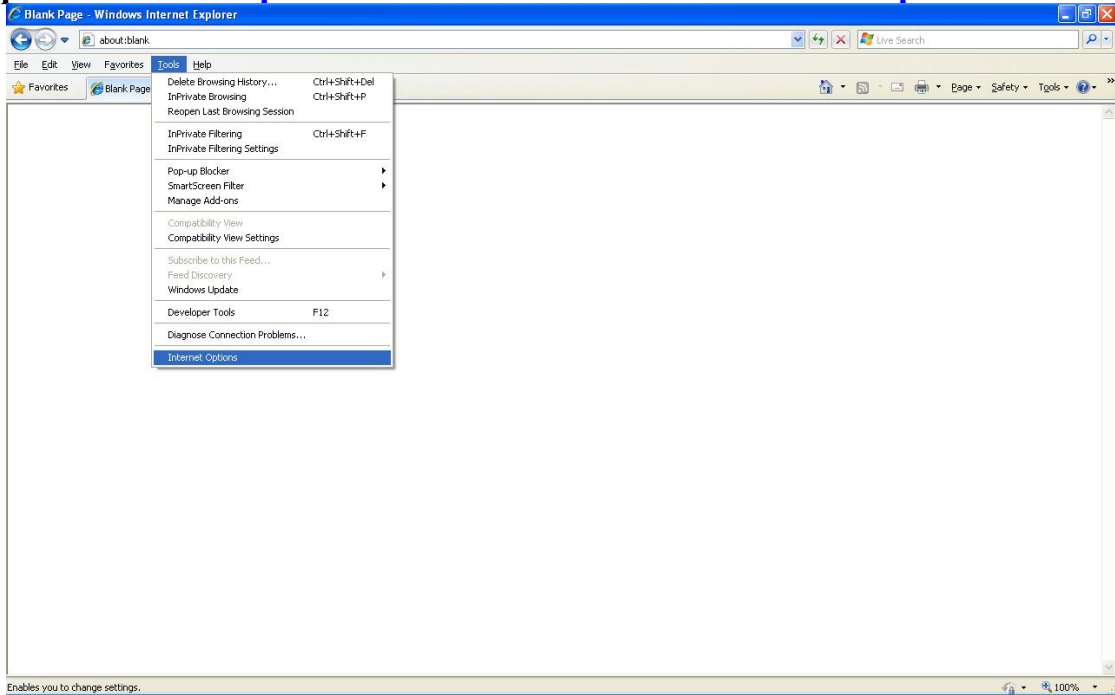
As below picture show Internet Explorer Version 8 (IE 8)



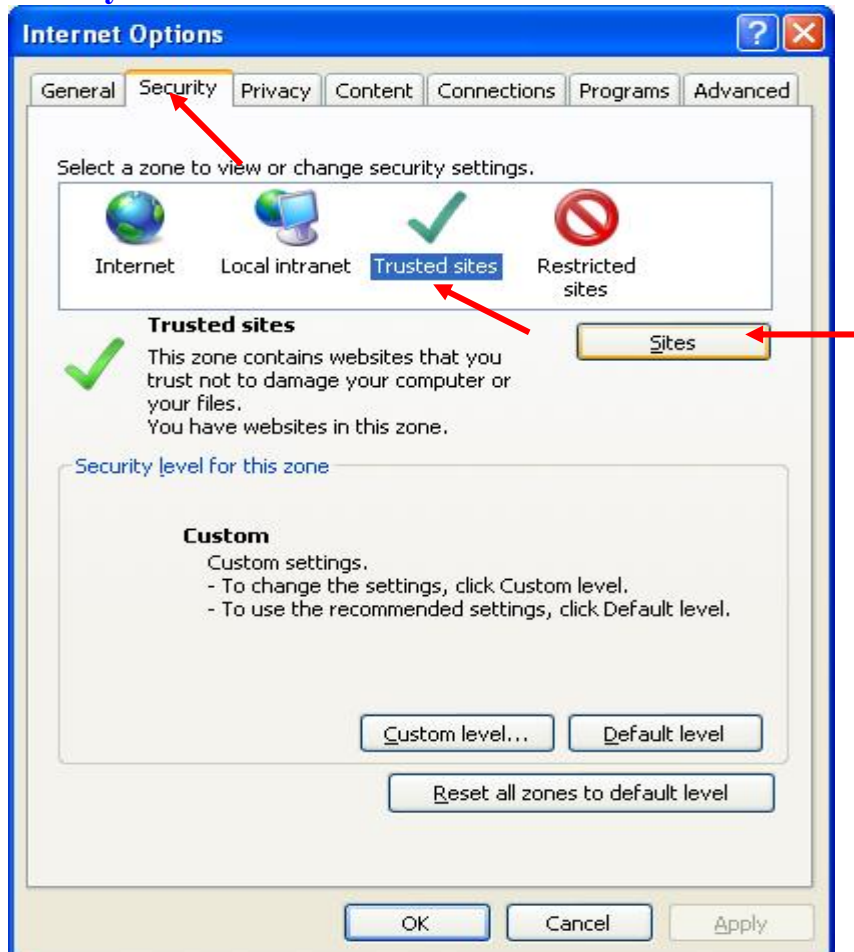
Step for Install Amadeus Selling Platform (Vista)

1. Active some Component of Windows step by step

1.1 Open Internet Explorer → Click Tools → Click Internet Options



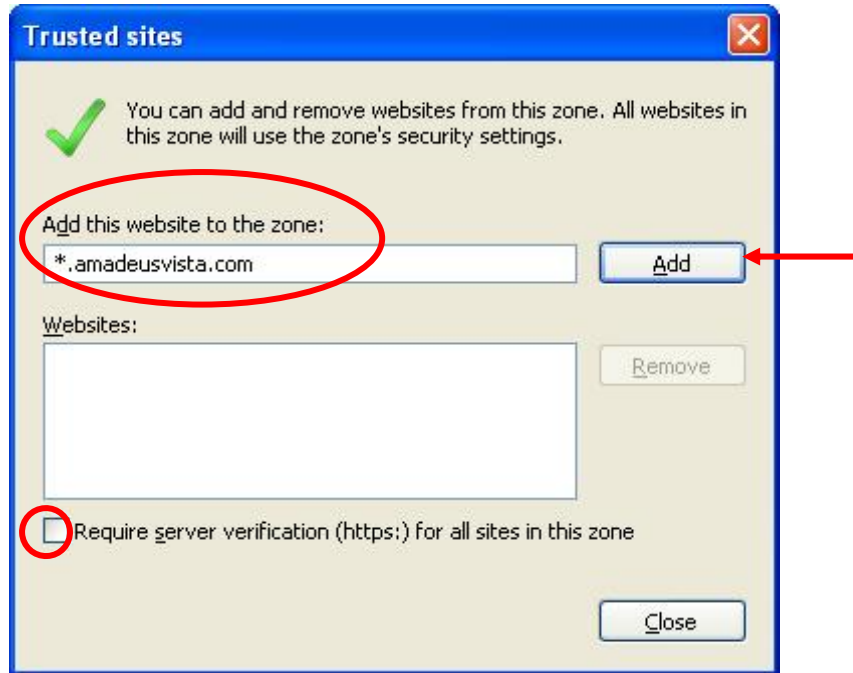
1.2 Click tab Security → Click Trusted sites → Click Sites



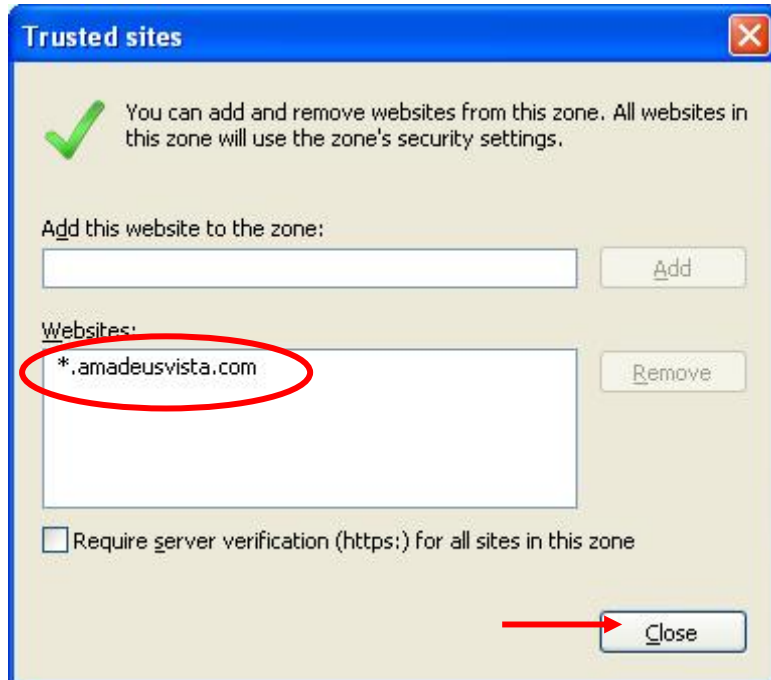
1.3. Trusted sites. Set configuration as below picture

1.3.1 Remove check box Require server verification (https:) for all sites in this zone

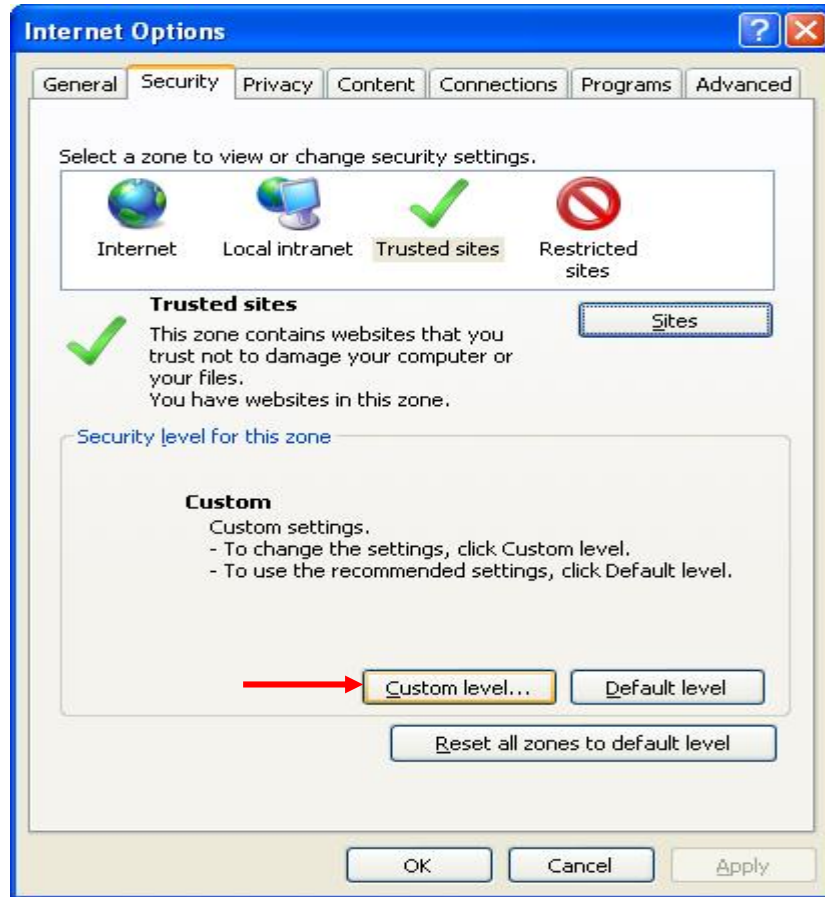
1.3.2 Type *.amadeusvista.com in block Add this website to the zone: → Click Add.



1.3.3 Show as below picture and Click 



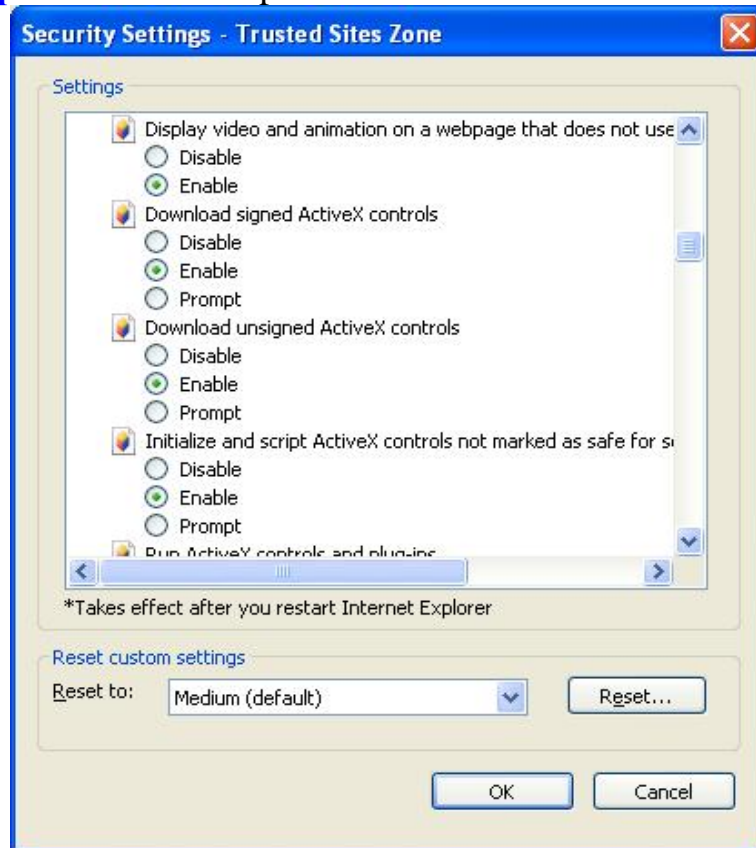
1.4 Click Custom Level...



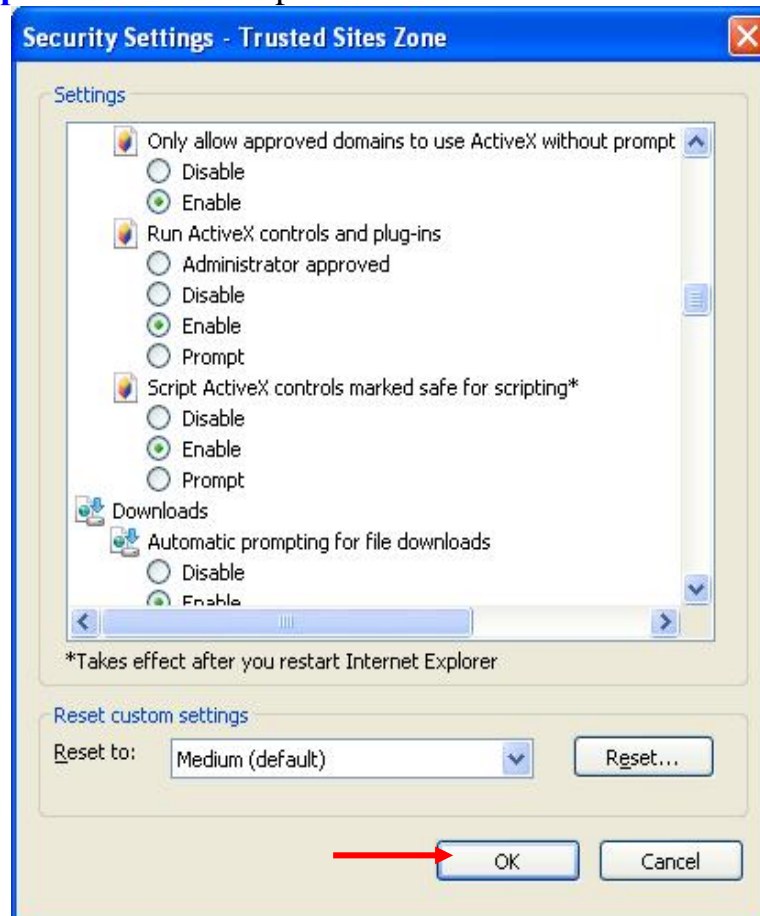
1.4.1 Move Scroll Bar to find ActiveX control and plug-ins and Enable Component all ActiveX control and plug-ins as below picture.



1.4.2 **Enable Component** as below picture.



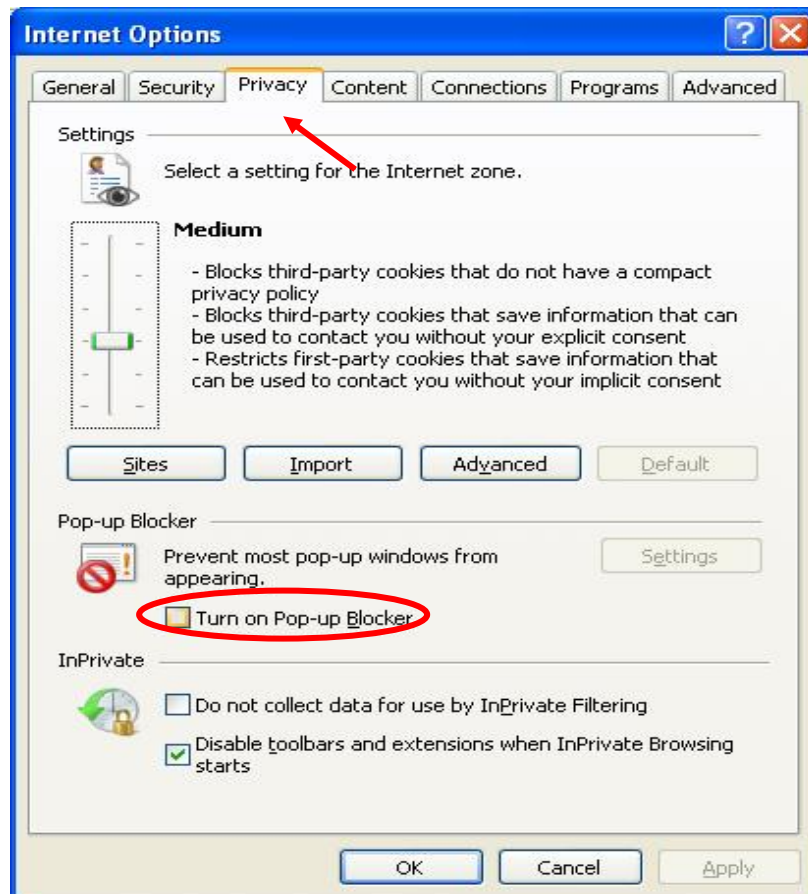
1.4.3 **Enable Component** as below picture → **Click OK**



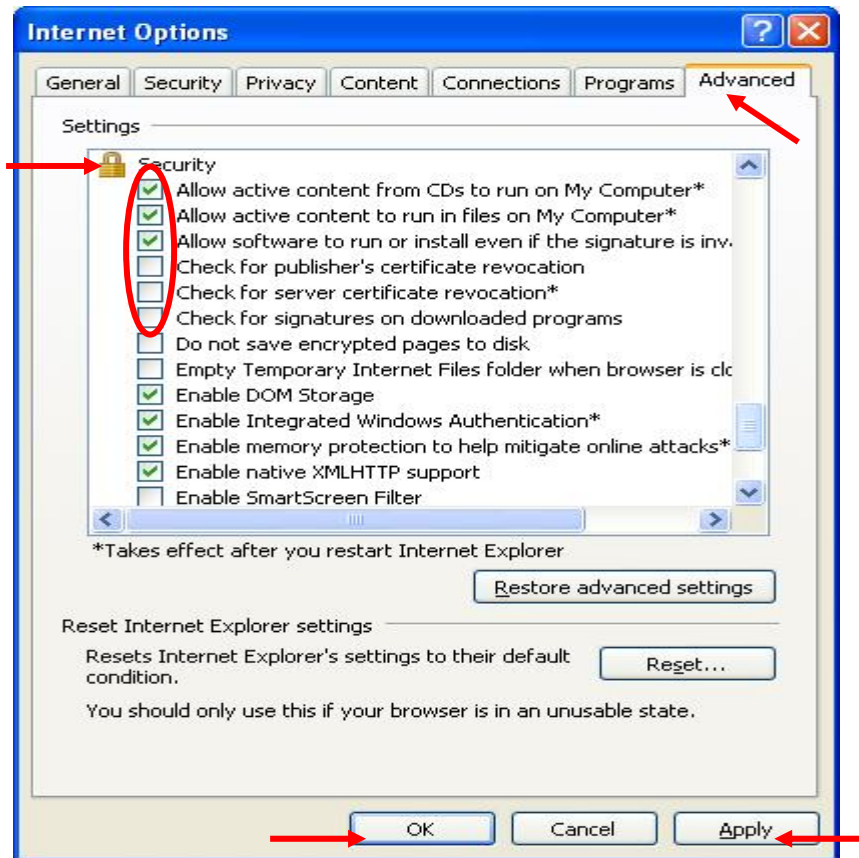
1.4.4 Click YES



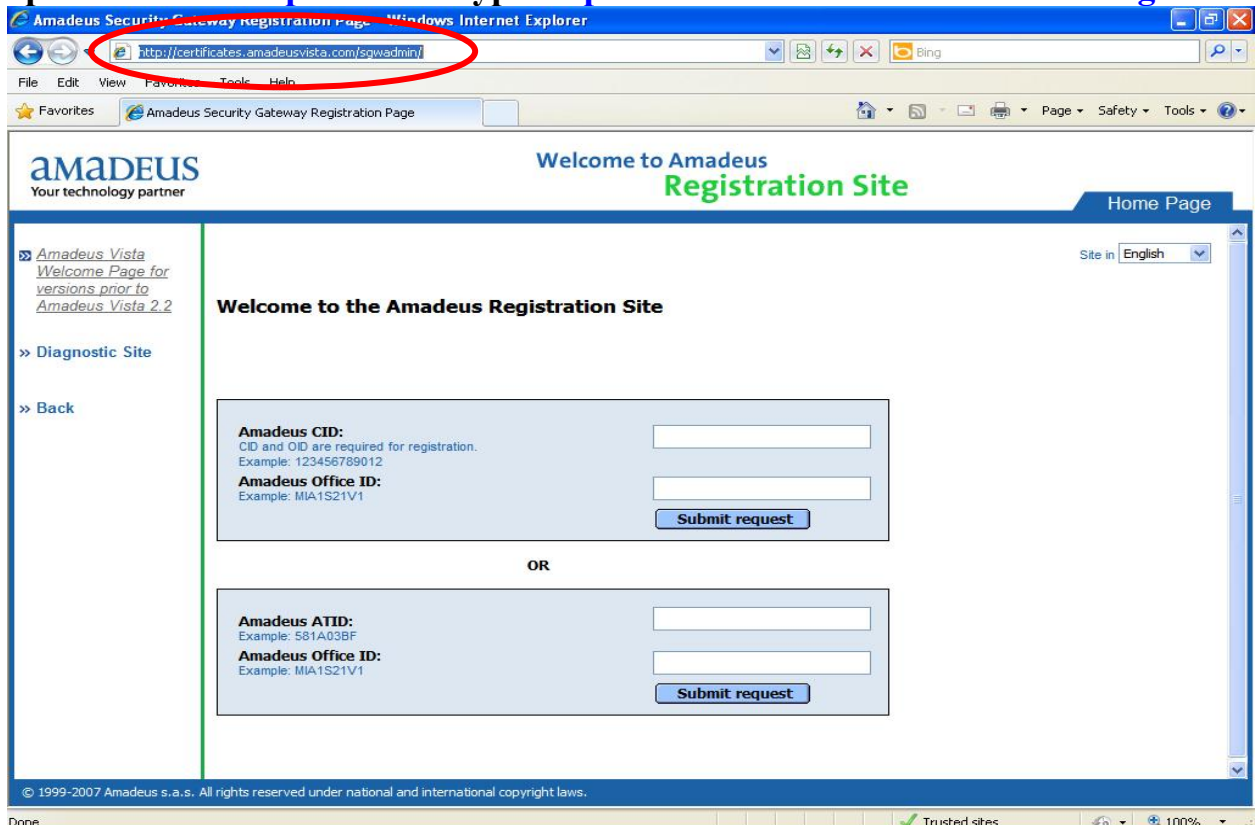
1.5 Click tab Privacy and Remove check box front Block pop-ups



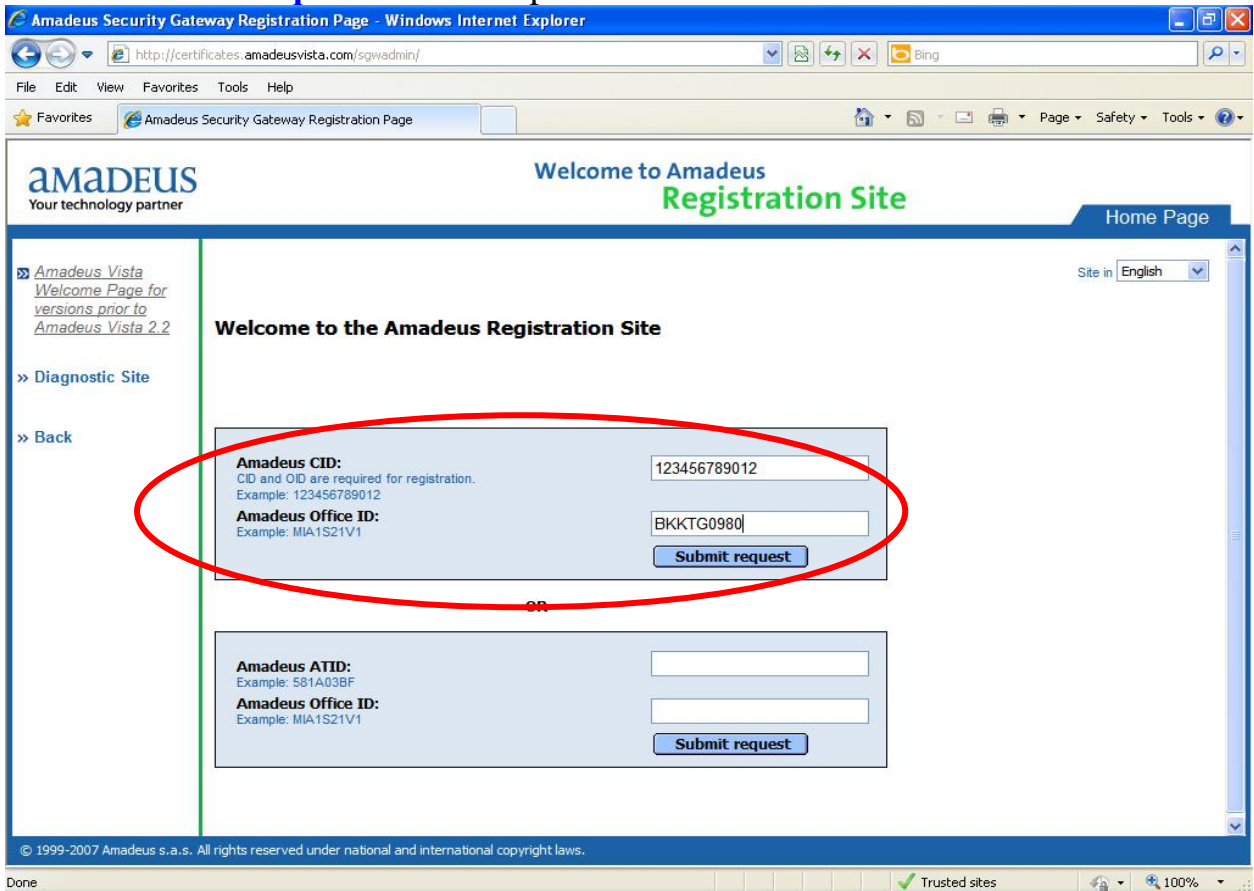
1.6 Click tab **Advanced** and **Move Scroll Bar** to find **Security** set configuration as below picture  → Click **Apply** → Click **OK**



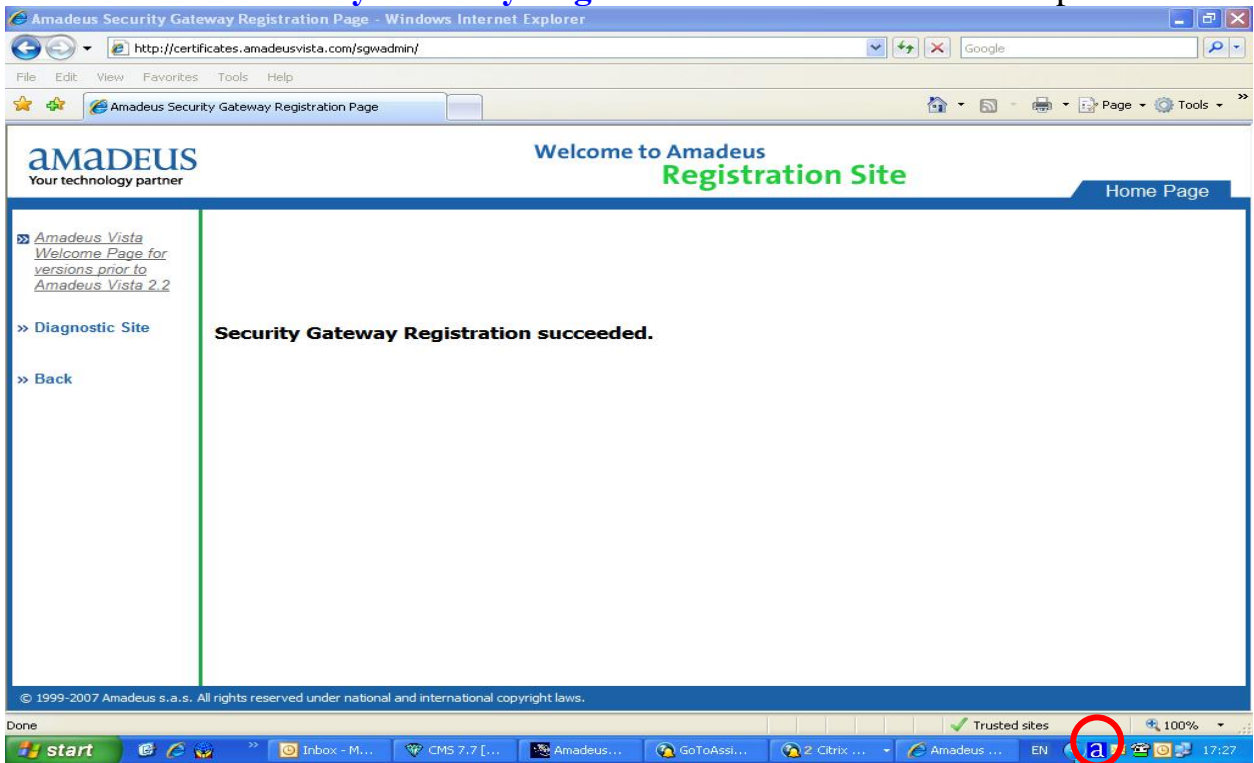
2. Open **Internet Explorer** and type <http://certificates.amadeusvista.com/sgwadmin>



3. Fill in no.CID (number 12 digit) in **Amadeus CID**: and your **Amadeus Office ID**:
→ Click **Submit request** as below picture.




4. Wait until show **Security Gateway Registration succeeded** as below picture.

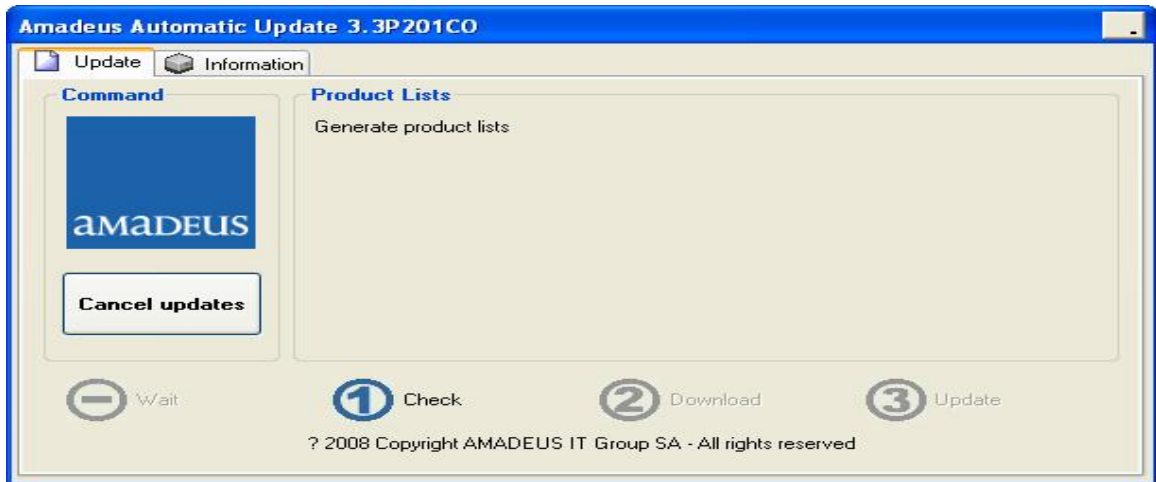


* When show as above picture mean CID register completed *

5. Show  (Amadeus Automatic Update) on task bar at right below.

6. Click  on task bar and wait download component data

Step1. Check



Step2. Download fast or slow depend your speed internet

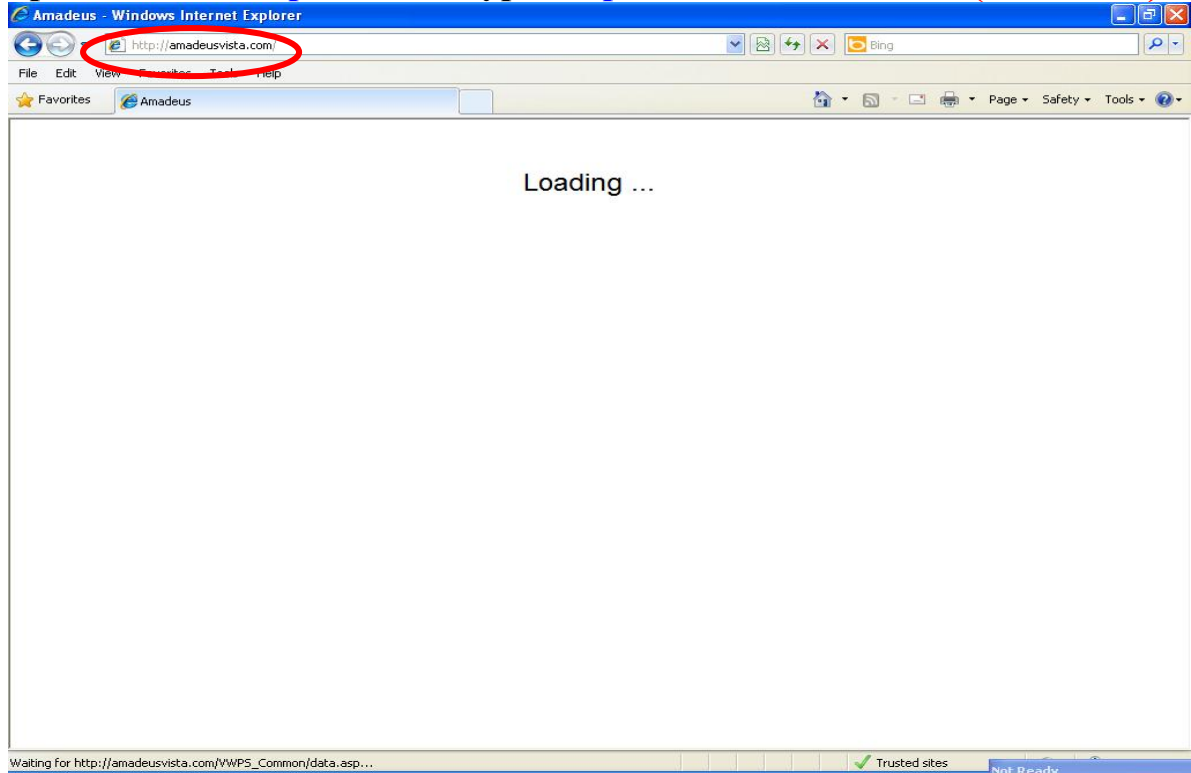


Step3. Update when install complete back to **Wait** again

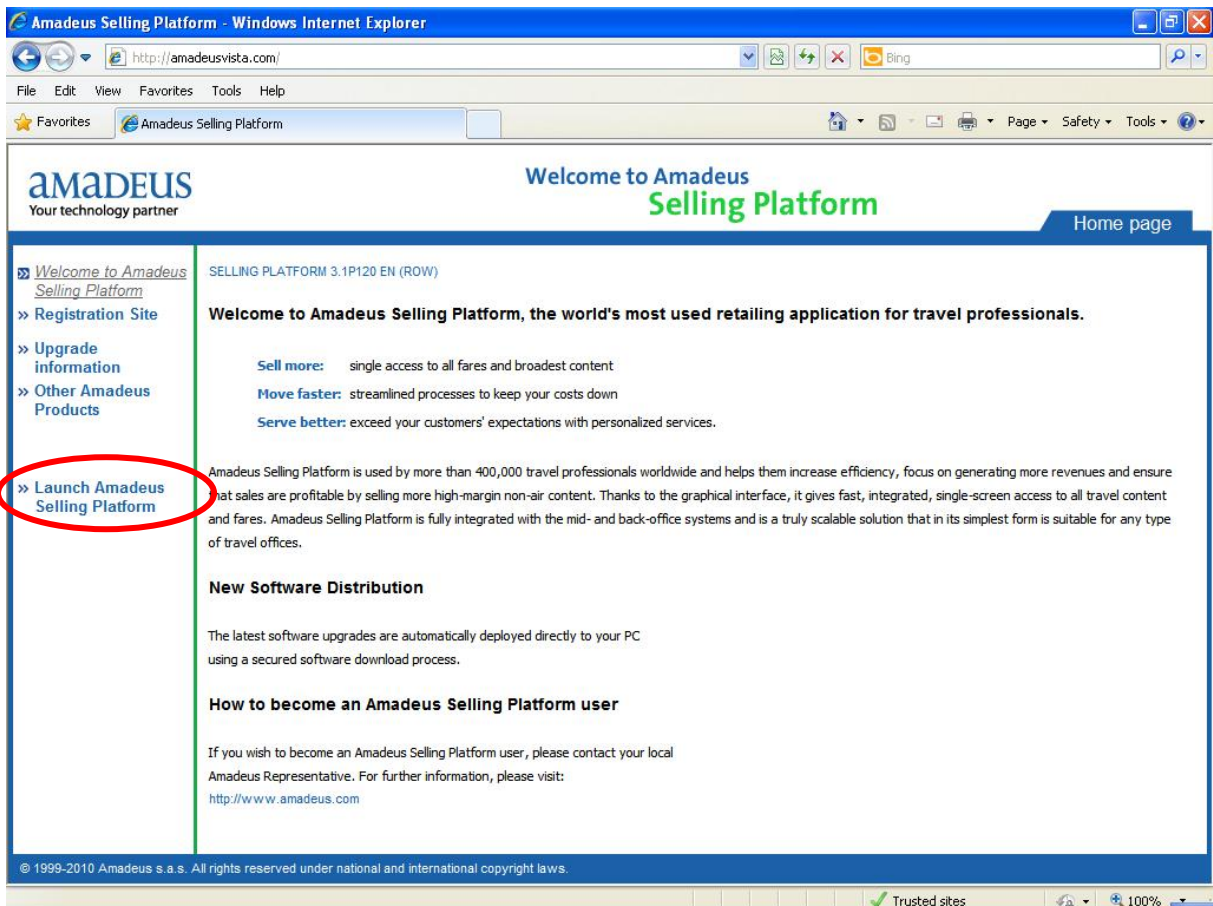


Step for use Amadeus Selling Platform (Vista)

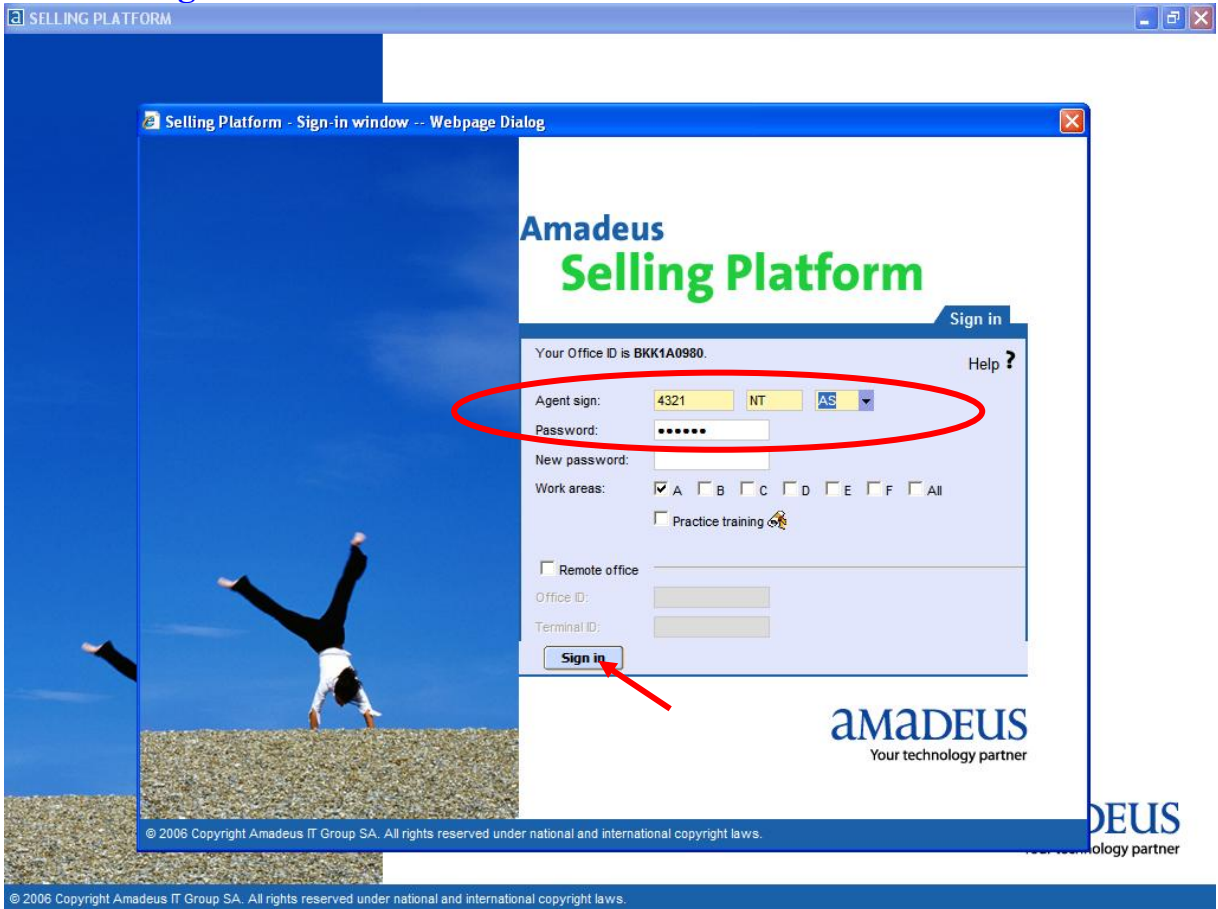
Open **Internet Explorer** and type **http://amadeusvista.com** (**No www.**)



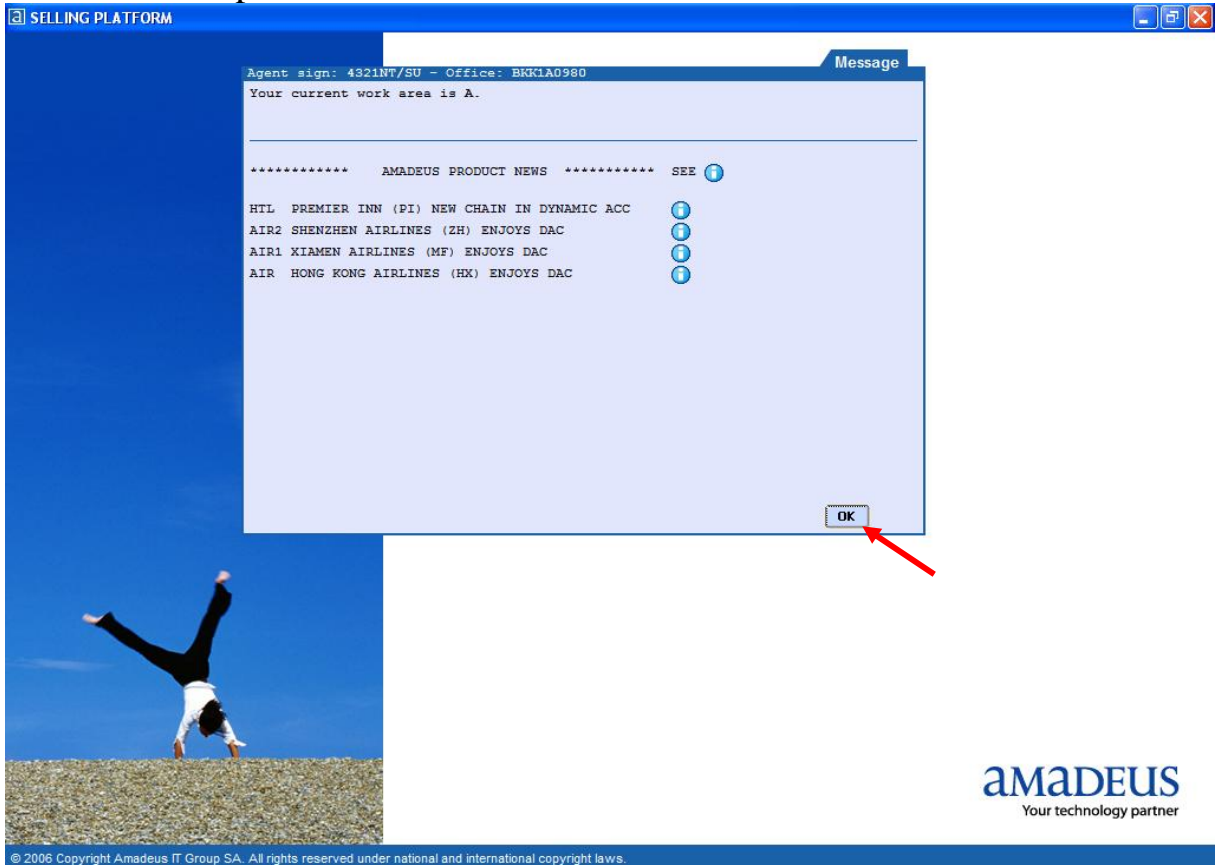
Wait for show as below picture and **click Launch Amadeus Selling**



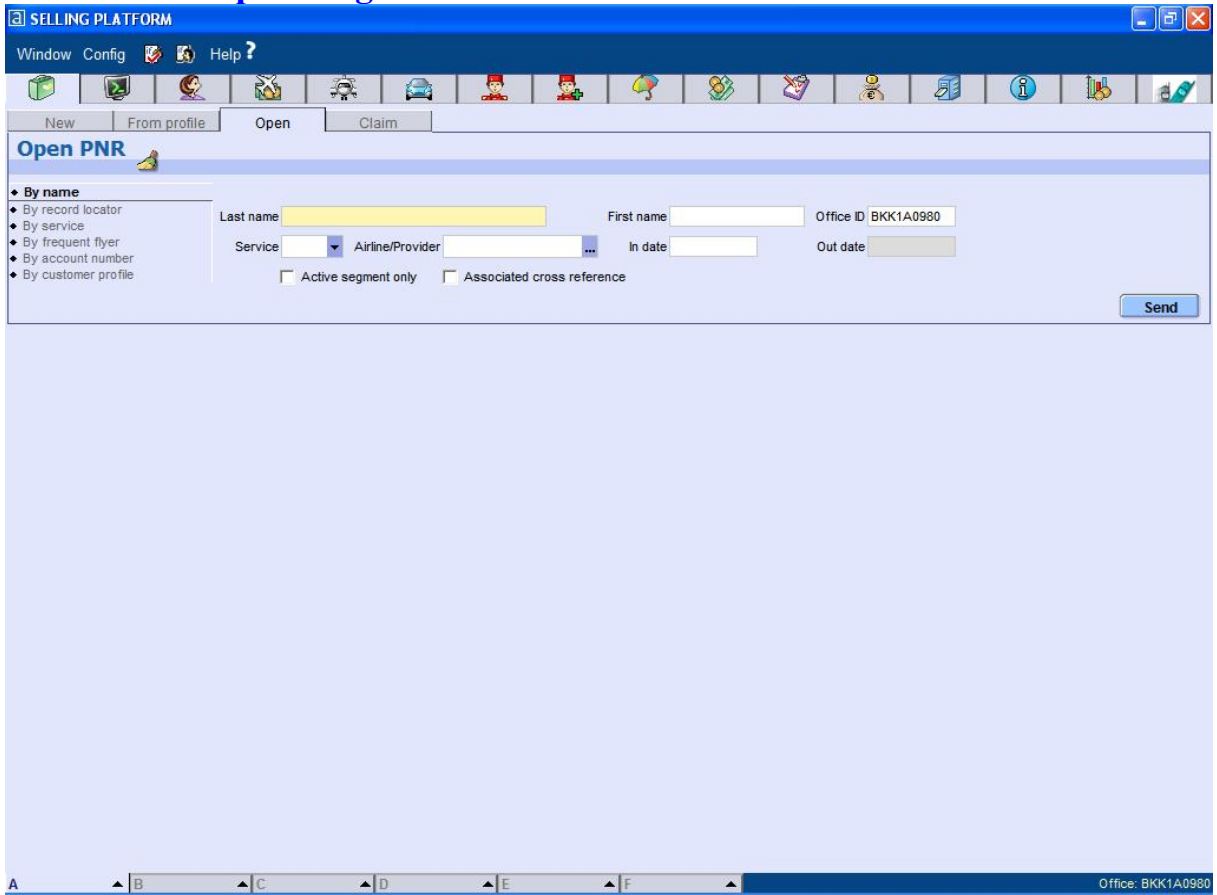
Wait for show as below picture **fill in your Agent Sign** , your **Password** and **click Sign in**



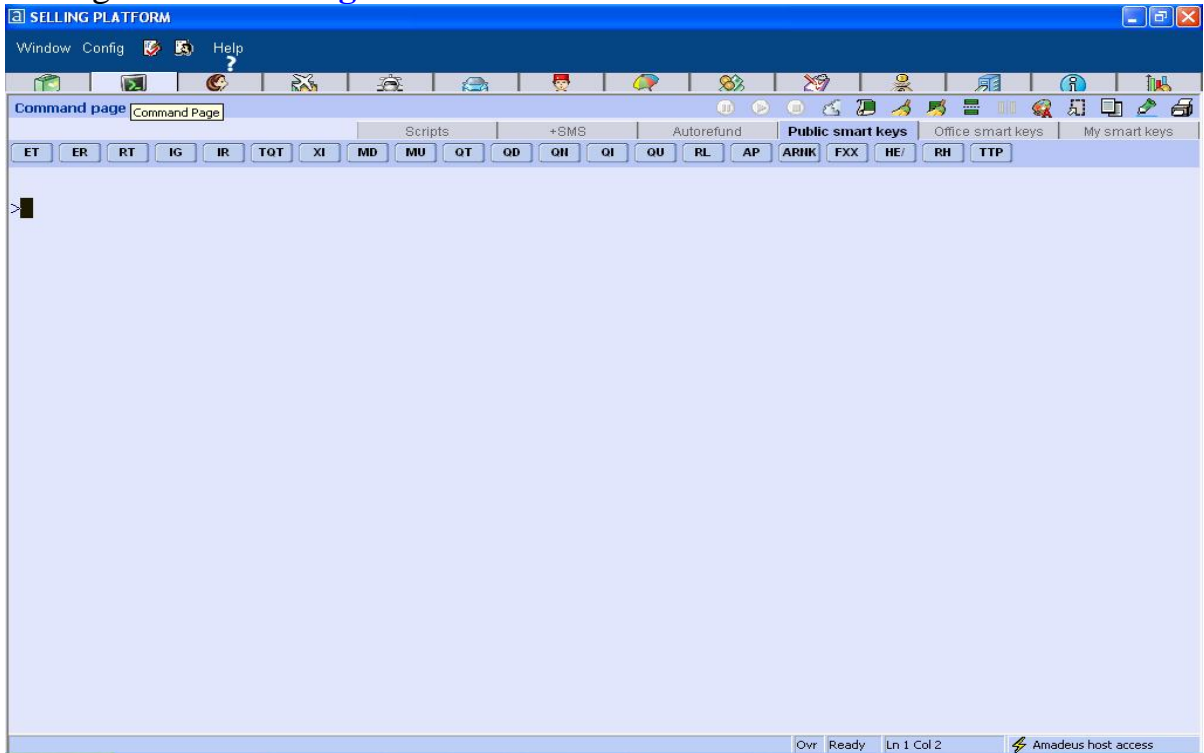
Show as below picture **Click OK**



Work Area **Graphic Page**



If using **Command Page** click tab



(Update on 30 JUL 2010 by NT)